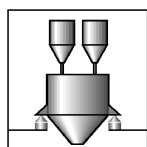
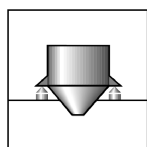
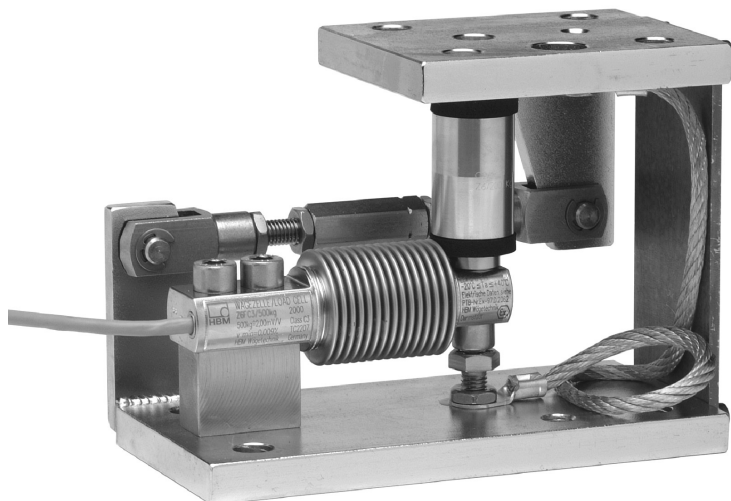


# Z6A/ML...

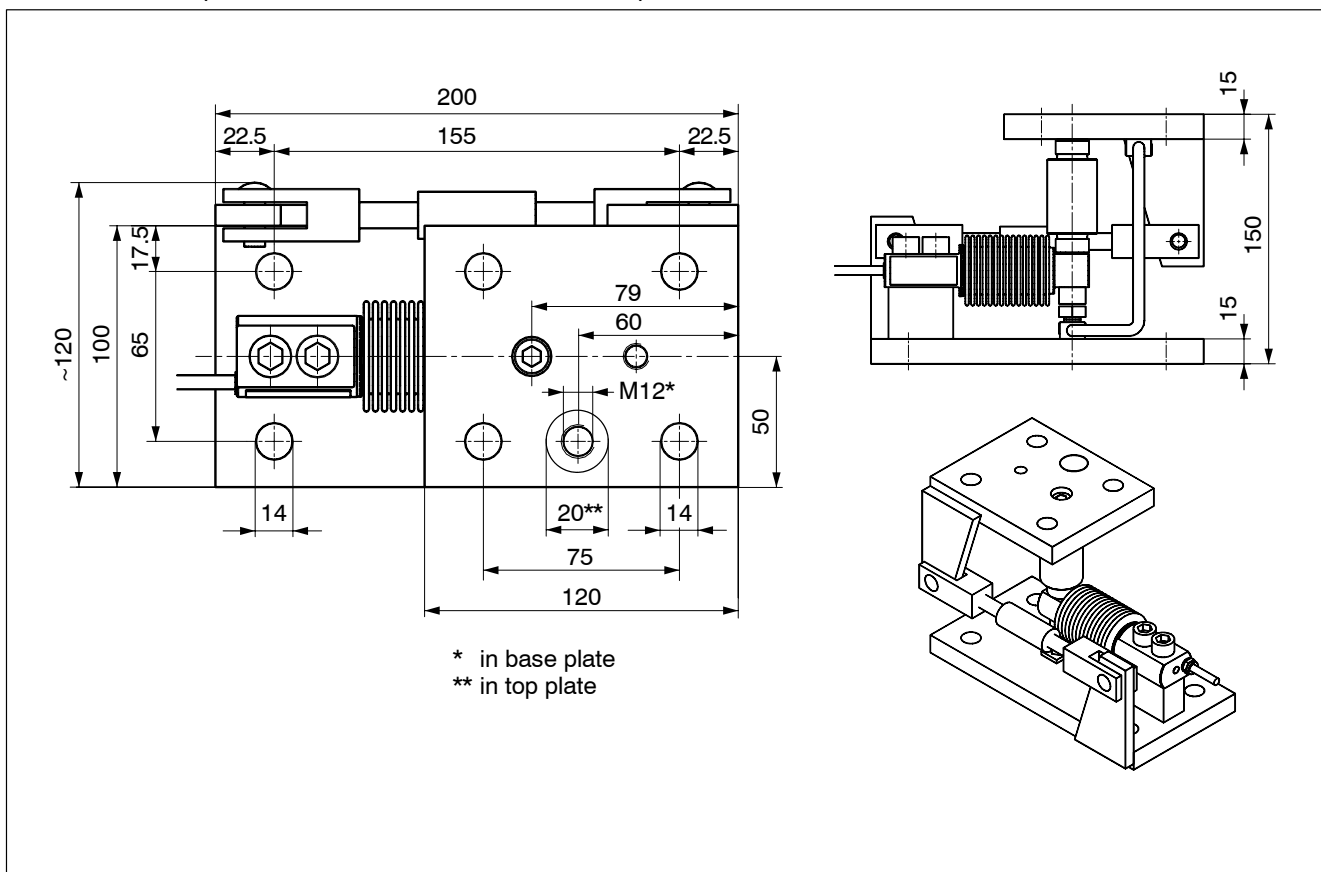
Tank weigh module for 50 kg ... 500 kg



## Special features

- Equipped with load cell Z6F... class D1 according to OIML R60
- With Overload stop and Transverse control arm
- Maintenance-free
- Compact installation at minimum installation height
- Easy installation
- Galvanized material and stainless steel version available
- Self-restoring due to pendle bearing
- **Optionally** with Load cell in
  - Class C3 accord. to OIML R60
  - EEx ib IIC T4-Version
- Prepared for Lift-off securing device

## Dimensions (in mm, 1 mm = 0.03937 inches)



## Technical data of the Tank weigh module Z6A/ML(R)/....:

<b>Maximum capacity</b>		<b>50kg</b>	<b>100kg</b>	<b>200kg</b>	<b>500kg</b>
<b>Limit load</b>	% of Maximum capacity	150			
<b>Restoring force</b> (at 1mm side offset)	% of Applied load	2.8			
<b>Maximum permissible side offset transverse to the control arm axis</b>	mm	±3.5			
<b>Maximum permissible horizontal force in the control arm direction</b>	kN	5			
<b>Material</b>		Galvanized or Stainless steel			
<b>Weight</b> (depending on the version, incl. load cell)	kg	8...9			
<b>Adjustment range of the overload stop</b>	mm	≤0.35	≤0.25	≤0.45	≤0.8

For technical data and additional information on the appropriate load cells, please refer to the Data sheet Z6F...

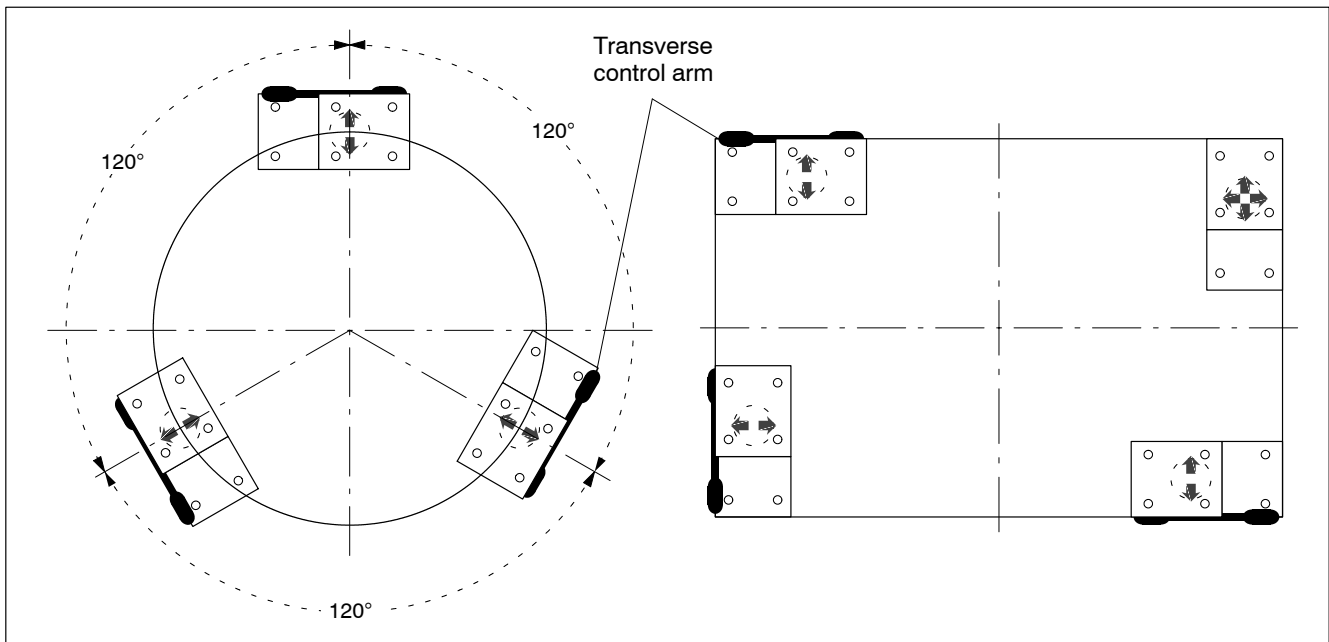
## Survey of ordering codes:

Maximum capacity	Galvanized material	Stainless steel
<b>50kg</b>	1-Z6A/ML50KG	1-Z6A/MLR50KG
<b>100kg</b>	1-Z6A/ML100KG	1-Z6A/MLR100KG
<b>200kg</b>	1-Z6A/ML200KG	1-Z6A/MLR200KG
<b>500kg</b>	1-Z6A/ML500KG	1-Z6A/MLR500KG

## Scope of delivery:

Tank weigh module with load cell Z6FD1/... (Standard) or Z6FC3/... (Option), complete mounted with transverse control arm, pendle support and ground wire

## Mounting examples for Tank weigh modules with Transverse control arms:



Hottinger Baldwin Messtechnik GmbH  
 Im Tiefen See 45, D-64293 Darmstadt, Germany  
 Tel.: +49 (0)6151 / 803 0; Fax: +49 (0)6151 / 803 9 100  
 www.hbm.com; e-mail: support@hbm.com

Modifications reserved.  
 All details describe our products in general form. They are not to be understood as express warranty and do not constitute any liability whatsoever.