

100 kg ... 10 t



Rubber foot 52-02 and SB4 load cell

### Product Description

Flintec load cell supports are designed to prevent unwanted forces from affecting load cell performance.

The type 52-02 is a self aligning rubber foot, combining excellent load introduction with low profile design.

A special low profile foot is available.

The height is adjustable by shims.

Especially designed for the SB4, SB5, SB14 and SLB load cells.

Material: steel, zinc plated; alternatively stainless steel.

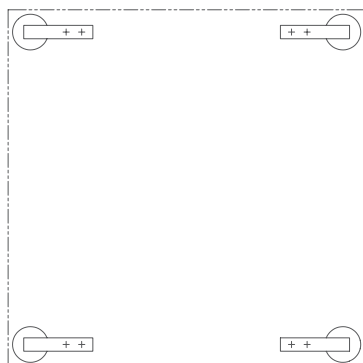
### Key Features

- Blind hole load introduction
- Capacity range: 100 kg to 10 000 kg
- Low profile
- Height adjustable with shims
- Very easy to install
- Especially designed for platform scales
- W&M certified
- A special low profile foot is available

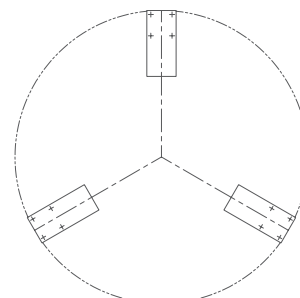
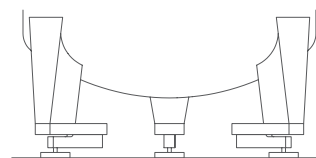
### Available Accessory

- Fixation plate

### Examples

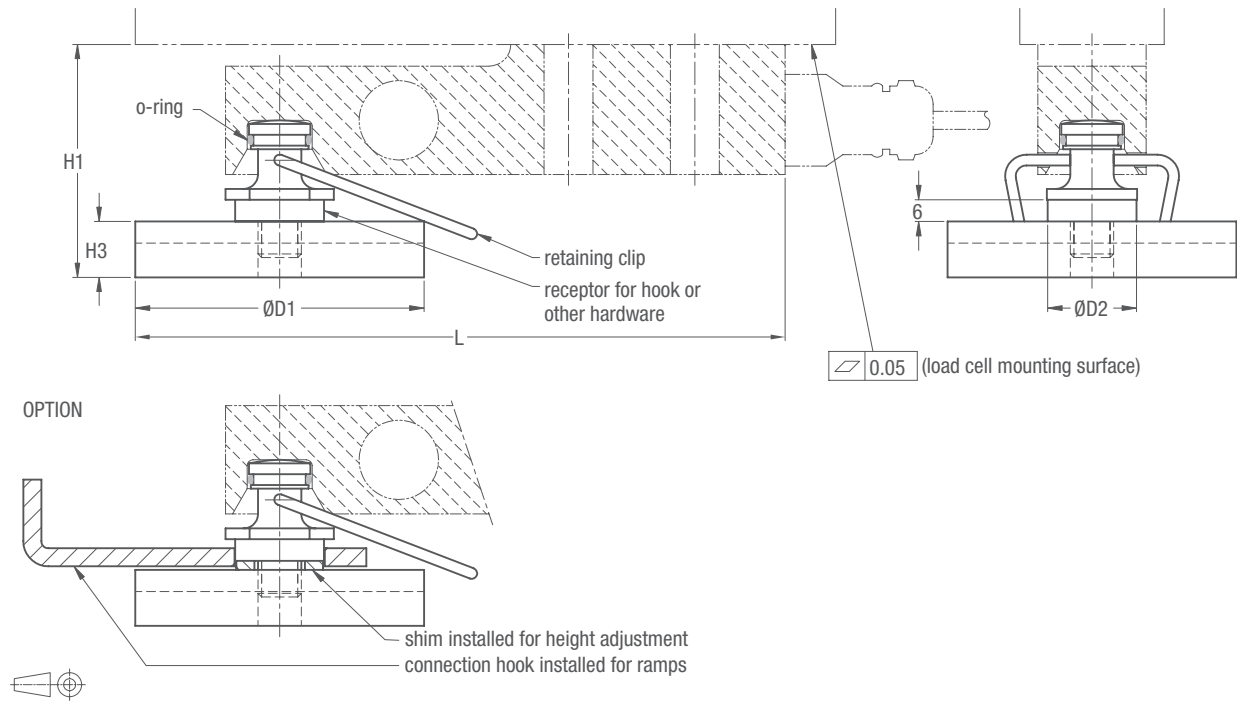


Platform scale with 4 load cells



Tank weighing system with 3 load cells (recommended base plate 52-00 included)

### 52-02 Dimensions (in mm)



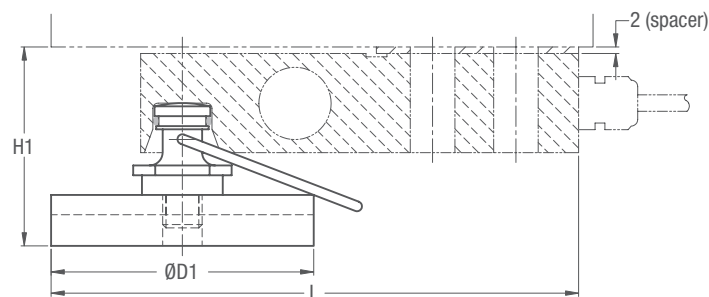
Load Cell Type	Capacity in kg	L	H1	H2	H3	D1	D2
SB4/SB5-5 kN/10 kN/20 kN	510/1020/2039	180	65	58	16	80	24.5
SB4/SB5-50 kN	5099	219	90	n.a.	18	100	34.5
SB4/SB5-100 kN**	10179	278	109	n.a.	26	125	44
SB14-500 lb/1 klb	227/454	164	60	53	16	80	24.5
SB14-2.5 klb/5 klb	1134/2268	164	62*	55*	16	80	24.5
SB14-10 klb	4536	209	85	n.a.	18	100	34.5
SLB-200 lb/500 lb	91/227	154	61*	54*	16	60	24.5
SLB-1 klb/2.5 klb/5 klb	454/1134/2268	164	61*	54*	16	80	24.5

\* Including spacer.

\*\* A special retaining clip is available.

CAD files for customer's own applications drawings are available on request.

### Details Type SLB Load Cell



### Low Profile Foot

